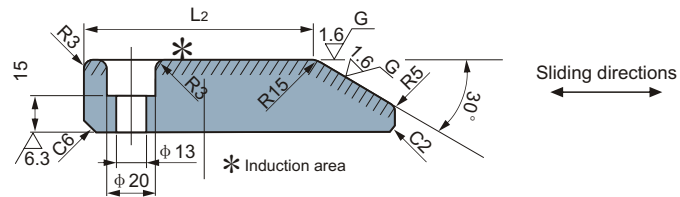
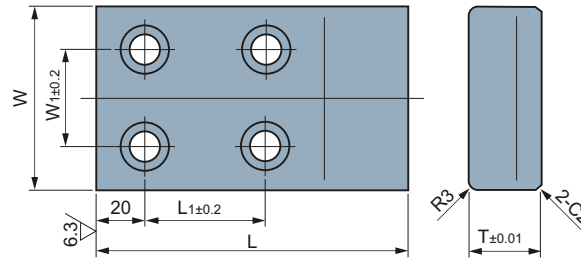
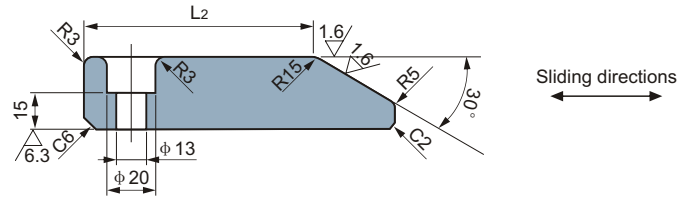
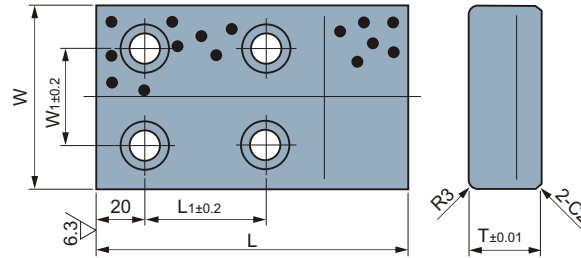
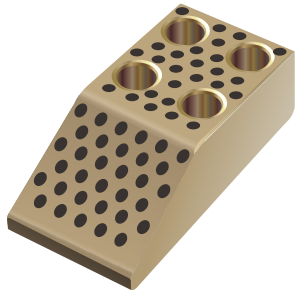


# JSPW, JSPS Cam Stroke Plate

JSPS	S45C + Graphite
	HRC $\geq 55$
JSPW	650# + Graphite



Standard No.	Material	W	L	T	W <sub>1</sub>	L <sub>1</sub>	L <sub>2</sub>
75 × 130	JSPW JSPS	75	130	30	40	50	95
75 × 150			150	45		45	90
100 × 130			100	130		30	60
100 × 150		150		45	45	90	
100 × 170		170		60	75	120	
100 × 200		200			75	120	
125 × 130		125	130	30	85	50	95
125 × 150			150	45		45	90
125 × 170			170	60		75	120
125 × 200			200			75	120
150 × 130		150	130	30	110	50	95
150 × 150			150	45		45	90
150 × 170			170	60		75	120
150 × 200			200			75	120