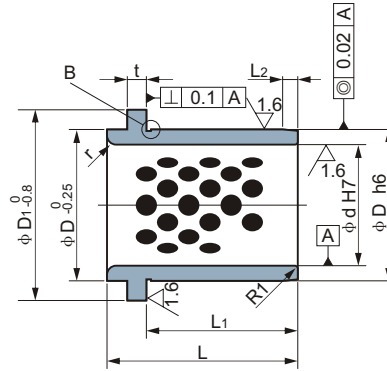
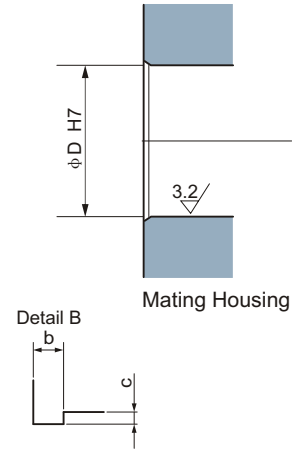


DIN9834 Oilless Guide Bushes 自润导套

Material 650# + Graphite

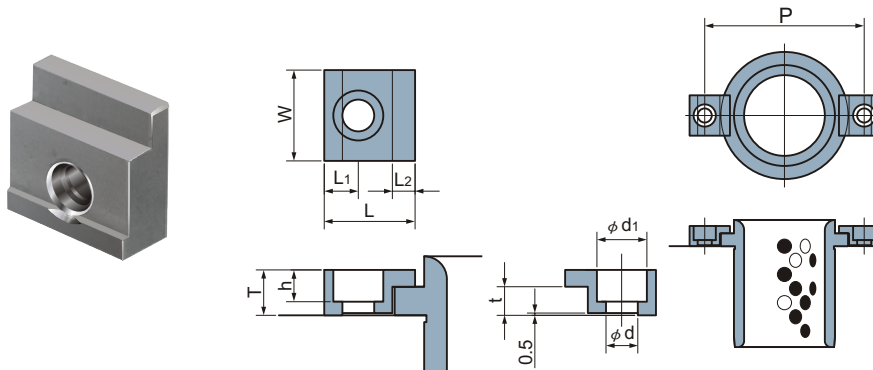


Sliding directions
运动方向



Standard No. 型号规格	d H7		D h6		L	D ₁	L ₁	L ₂	t	r	bxc	P
9834-025	25	$\begin{smallmatrix} +0.021 \\ 0 \end{smallmatrix}$	32	$\begin{smallmatrix} 0 \\ -0.016 \end{smallmatrix}$	40	40	30	3	6.3	3	0.6 × 0.3	58
9834-032	32	$\begin{smallmatrix} +0.025 \\ 0 \end{smallmatrix}$	40		50	50	40	4				66
9834-040	40		50		63	63	50	5				79
9834-050	50	$\begin{smallmatrix} +0.030 \\ 0 \end{smallmatrix}$	63	0	71	71	56	6.3	10	5	1.0 × 0.4	89
9834-063	63		80	-0.019	80	90	63	8				123
9834-080	80		100	$\begin{smallmatrix} 0 \\ -0.022 \end{smallmatrix}$	100	112	80	10				143
9834-100	100	$\begin{smallmatrix} +0.040 \\ 0 \end{smallmatrix}$	125	0	125	140	106	12.5	18	10	1.0 × 0.4	168
9834-125	125		160	-0.025	160	180	132	16				203
9834-160	160		200	$\begin{smallmatrix} 0 \\ -0.029 \end{smallmatrix}$	200	220	170	16				243

Clamp VDI-KL(DIN9834)



Clamp 压板

Standard No.	W	L	T	L ₁	L ₂	t	d	d ₁	h	Applicable bushes ID
VDI-KL-6	20	20	10	7.5	5	6.3	7	11	7	φ 25~ φ 50
VDI-KL-10	32	32	16	11	10	10	11.5	17.5	11.5	φ 63~ φ 160